

# OUR CORPORATE STORY



COVERING A **GREEN** FUTURE



**MEMBRANE  
SYSTEMS EUROPE**

# COMPANIES



- › Membrane Systems Europe B.V, is specialized in the design, production and installation of 100% high-frequently welded double membrane covers and biogas domes ([www.biogasmembrane.eu](http://www.biogasmembrane.eu)).



- › Dutch Cover Solutions B.V, (DCS) is specialized in the design, production and installation of single membrane covers and concrete protection ([www.dutchcover.solutions](http://www.dutchcover.solutions)).



- › DCS and Membrane Systems Europe B.V. are 60% owned by Serge Ferrari Group ([www.sergeferrari.com](http://www.sergeferrari.com)), French producer of reinforced technical textile (annual turnover approx. Euro 400.000.000).



- › Serge Ferrari Group is also 60% shareholder in Deutsche Biogas Dach Systemen ([www.dbds-gmbh.de](http://www.dbds-gmbh.de)).



- › Upbiogas®, Gerona Spain, (MSE 100% shareholder) is specialized in development, execution and assembly of pressurized tensile structures ([www.upbiogas.es](http://www.upbiogas.es)).

- › With a total turnover of Euro 25.000.000 realized by MSE, DCS and DBDS in 2022, Serge Ferrari is market leader in the production and installation of double membrane covers worldwide.



# UNIQUE SELLING POINTS

- › Very long life expectancy products (> 15 years)
- › Biogas-products: 100% high-frequently-welded
- › Parallel design
- › Application of technologically advanced components, complying with latest international legislation
- › Application new concepts: insulation, solar
- › Quick, secure installation due to own installation teams
- › Proven record of 4.000 installed membrane covers in more than 50 countries in recent 15 years



**721**

projects we have  
finished till now



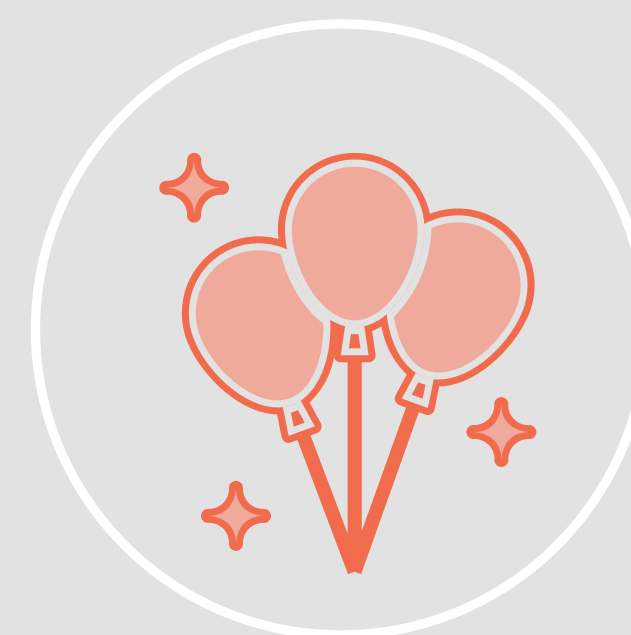
**613200000**

kw delivered annual  
capacity total



**52**

countries we  
are active



**31**

years of experience  
in the industry

COVERING A GREEN FUTURE

EXPERIENCE: >4.000 INSTALLED

DOUBLE / SINGLE MEMBRANE COVERS

- › Turkey
- › Netherlands
- › Germany
- › Belgium
- › Italy
- › France
- › Spain
- › United Kingdom
- › Ukraine
- › Letland
- › Lithuania
- › Latvia
- › Sweden
- › Portugal
- › Ireland
- › Denmark
- › Russia
- › Poland
- › Bulgaria
- › Czech Republic
- › Costa Rica
- › Burkina Faso
- › Japan
- › Ghana
- › Slovakia
- › Austria
- › Switzerland
- › USA
- › India
- › Romania
- › Hungary
- › Luxembourg



ABOUT US



# EUROCODE 1, TRAS 120

DIN 1055 is a German norm for affecting forces on supporting constructions.

Nowadays substituted by European Norm Eurocode 1.

## Divided in a few sections:

- › 1.1 general actions (self weight, imposed loads)
- › 1.3 general actions (snowload)
- › 1.4 general actions (windload)

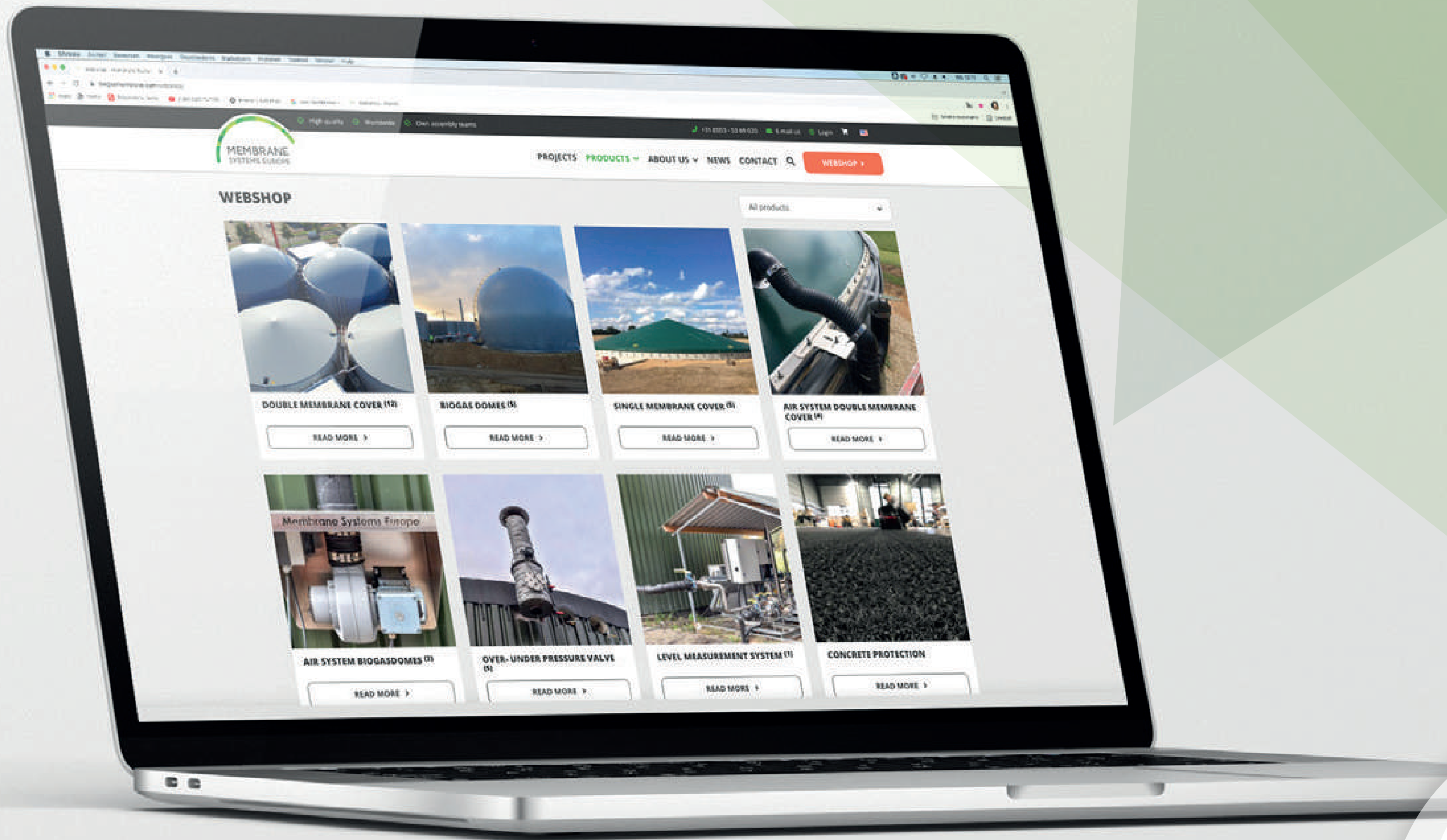
For every country Annex with detailed information about snow and windload.

MSE-covers comply with TRAS 120 regulation.



COVERING A GREEN FUTURE

FIND US ONLINE AT [WWW.BIOGASMEMBRANE.EU](http://WWW.BIOGASMEMBRANE.EU)!



ABOUT US



# DOUBLE MEMBRANE COVER

## BENEFITS FOR OUR CUSTOMERS

- › Our Double Membranes can be used for anaerobic digestion installations in the agricultural market as well as for industrial wastewater treatment plants.
- › We always deliver a complete, safe and high quality product.
- › Our Double Membranes are 100% frequency welded and available up to a diameter of 50 m / 164 ft.
- › Our experienced and skilled installation and service crew will install the products competently.

**This means during the entire process you have nothing to worry about!**



## COVERING A GREEN FUTURE

### PROJECT

# GLOBINO CITY

UKRAIN

### Products:

- › 2x Double Membrane covers  
Ø22 m / 72 ft

### Specifications:

- › Gas production/withdrawal: 750 m<sup>3</sup>/h  
(flexible volume per tank)
- › Yearly production: 13.140.000 m<sup>3</sup>
- › Average family uses: 1650 m<sup>3</sup>/day
- › This installation can foresee:  
+/- 7964 households!





## COVERING A GREEN FUTURE

### PROJECT

# HEBRON

## PALESTINE

### Products:

- › 2x Double Membrane covers  
Ø22 m / 72 ft

### Specifications:

- › Gas production/withdrawal: 200 m<sup>3</sup>/h  
(flexible volume per tank)
- › Yearly production: 1.752.000 m<sup>3</sup>
- › Average family uses: 1650 m<sup>3</sup>/day
- › This installation can foresee:  
+/- 1062 households!



## COVERING A GREEN FUTURE

### PROJECT

# SIoux FALLS

## SOUTH DAKOTA

USA

### Products:

- › 5x Double Membrane covers  
Ø36,58 m / 120 ft
- › 1x Double Membrane cover  
Ø30,48 m / 100 ft

### Specifications:

- › Gas production/withdrawal:  
325 m<sup>3</sup>/h (per cover)



## COVERING A GREEN FUTURE

### PROJECT

# EXETER

## MAINE

### USA

### Products:

- › 1x Double Membrane cover  
Ø44 m / 144 ft

### Specifications:

- › Gas production/withdrawal: 1800 m<sup>3</sup>/h
- › Yearly production: 15.768.000 m<sup>3</sup>
- › Average family uses: 1650 m<sup>3</sup>/day
- › This installation can foresee:  
+/- 9556 households!

**MSE INSTALLED**

**LARGEST DM COVER IN USA**



COVERING A GREEN FUTURE

PROJECTS

# VARIOUS PROJECTS

FRANCE

- › Prémery
- › Gommersdorf
- › Precieux
- › Grandcourt
- › Chateaneuf-sur-loire
- › Langres



DOUBLE MEMBRANE COVER



# SINGLE MEMBRANE COVER

## BENEFITS FOR OUR CUSTOMERS

- › The Single Membrane Structure is constructed out of heavy polyester textile with a synthetic coating material on both sides to reduce emissions.
- › The membrane constructions are designed for all types of tanks, for example stainless steel tanks, glass-fused-steel tanks and concrete tanks.
- › Single Membrane Structures are covers with a central column and a membrane material that is welded to shape and tensioned in place.
- › No use is made of supporting beams here. The covers are made of membrane material that is fire resistant, sun resistant, UV resistant and reinforced.



## COVERING A GREEN FUTURE

### PROJECT

# SANDBEIENDORF

GERMANY

### Products:

- › 5x Single Membrane covers  
Ø34,97 m / 115 ft

### Specifications:

- › Membrane: type 2, 900 gr/m<sup>2</sup>
- › Colour: grey RAL7001
- › Column: tropical hardwood: 375×375 mm (thickness)
- › 3x manhole 2 x 2 m (per cover)
- › Belt-distance of 0.70 m
- › Roof angle of 18°
- › 200 mm volant



## COVERING A GREEN FUTURE

### PROJECT

# ENNIGERLOH

## GERMANY

### Products:

- › 1x Single Membrane cover  
Ø10,5 m / 34,4 ft
- › 1x Single Membrane cover  
Ø21,5 m / 70,5 ft

### Specifications:

- › Membrane: type 2, 900 gr/m<sup>2</sup>
- › Column: tropical hardwood:  
200×200 / 300×300 mm (thickness)
- › 1x manhole of 1.50 x 1.50 m
- › 1x manhole 3 x 6 m (for the larger roof)
- › Belt-distance of 1 m



COVERING A GREEN FUTURE

PROJECTS

# VARIOUS PROJECTS

- › Hungary
- › Belgium
- › France
- › Germany



SINGLE MEMBRANE COVER





# BIOGAS DOMES

## BENEFITS FOR OUR CUSTOMERS

- › MSE's gas storage systems are exclusively manufactured from advanced structural fabrics and designed as membranes to provide both structural (climatic) stability and impermeable gas storage.
- › Stainless steel anchorage connecting the membranes.
- › Gasholders are provided with inflation fans and full instrumentation to measure and control the storage process.
- › Biogas Domes can be used in (e.g.) solid waste processing facilities, sewage water and sludge treatment facilities, agricultural waste treatment projects, and agricultural- and industrial biogas installations.



# COVERING A GREEN FUTURE

